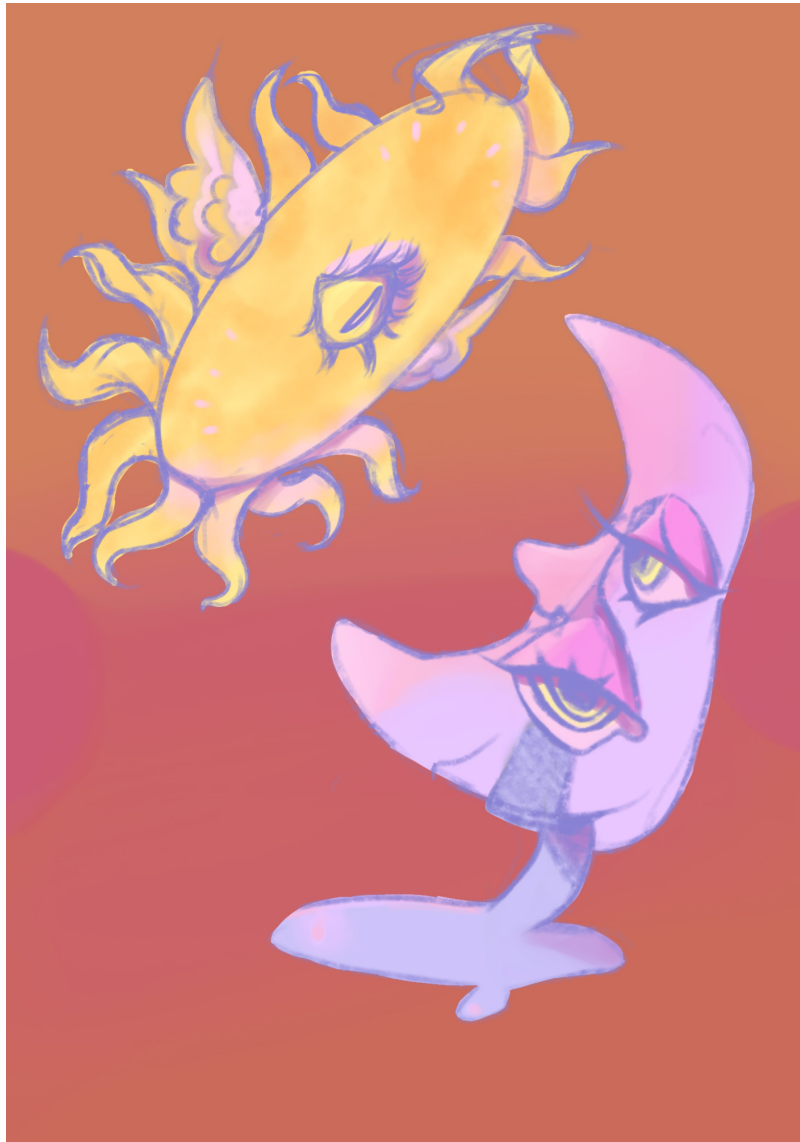


Sky: Look Up

Mayte Campos-Tovar



My artwork was made digitally, with it being inspired by a photograph shown in Gellman's medical humanities class. It has a strong theme of sadness, and the symbols within the piece are easy to attribute a dichotomy in meaning. As a happy coincidence, it resembles the mavs for medical humanities logo. A subtle nod to religion and angels is included in the sun character, while the symbol of the moon reminds me of the tragedy mask from the theatre symbol.